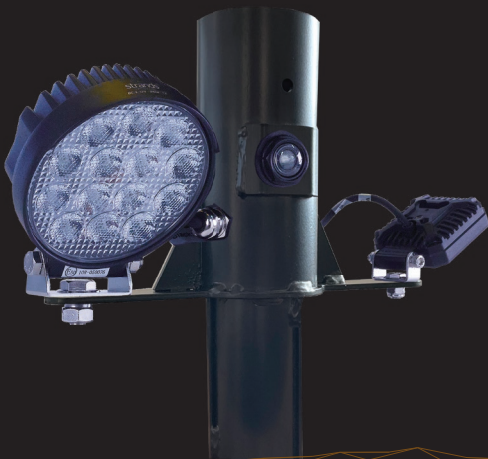


The BEE SEEN LED Pedestrian Spotlight is the ideal way to enhance lighting at pedestrian crossings. A powerful spotlight illuminates the road crossing while an optional supplementary light illuminates any waiting pedestrians.

Available as a retrofit unit, the BEE SEEN Pedestrian Spotlight is quickly and easily fitted to any 76mm post installation. Also available pre-fitted to any of our BEE SEEN illuminated posts and retrofit posts.

- High Brightness 19 watt crossing illumination (1,942 lm)
- Optional pedestrian 10 watt waiting area illumination (930 lm)
- IP 68K sealed units
- Photocell switched
- Fits between any 76mm beacon and post top
- Quickly installed
- Photometric data available



Portland Traffic is the new sister company of Portland Lighting, recognised lighting specialist since 1994.

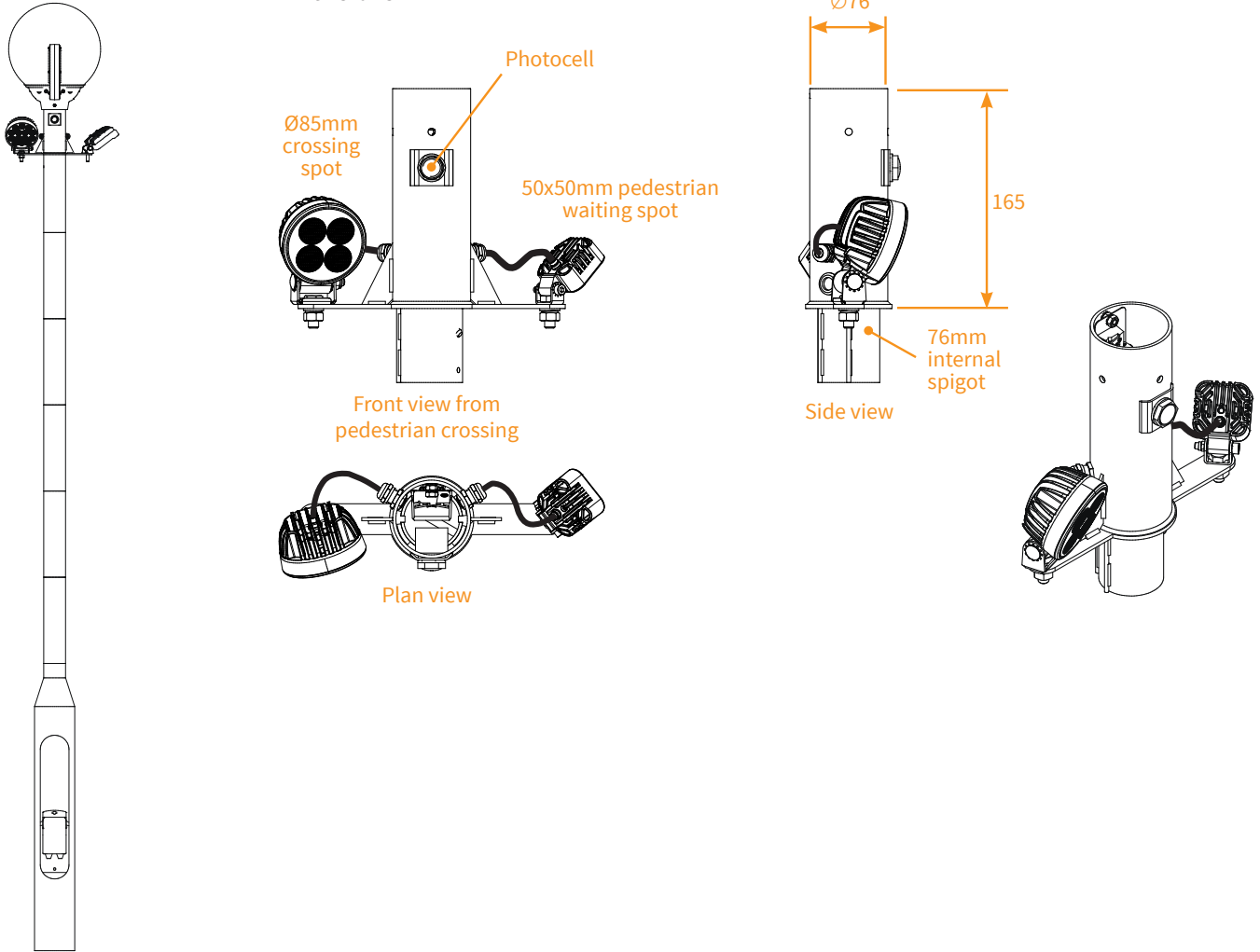
Portland Traffic has 100 years of combined industry knowledge and is part of the internationally recognised PLC F.W Thorpe.

The Bee Seen pedestrian spotlight uses high quality materials and advanced designs to give many years of trouble-free service.



Technical Specification

Dimensions



Construction

Crossing Spotlight	85mm diameter, tough automotive grade light with die cast aluminium body and polycarbonate lens. Power consumption 19 watts with 1942lm output. Stainless steel brackets and fasteners. Sealed to IP68. 10-32 Vdc operation. Operating Temp -30°C – +65°C
Pedestrian Waiting Spotlight (Optional)	Optional 50 x 50mm square, tough automotive grade light with die cast aluminium body and polycarbonate lens. Power consumption 10 watts with 930lm output. Stainless steel brackets and fasteners. Sealed to IP68. 10-32 Vdc operation. Operating Temp -30°C – +65°C
76mm Mounting Bracket	Fabricated steel hot dip galvanised after manufacture and polyester powder coated black. Bracket houses 240Vac to 24 Vdc IP65 switch mode power supply and Microstar 2000 PE cell @ 70 Lux. All fasteners stainless steel. Supplied with 4m x 3 core drop lead for mains connection. IP68 stainless steel glands.
Spotlight gear housing (illuminated post only)	130 x 130 x 77 mm IP 67 Injection moulded UL94V-0 polycarbonate enclosure housing 240Vac to 24 Vdc IP65 switch mode power supply and Microstar 2000 PE cell @ 70 Lux. IP68 stainless steel glands. All fasteners stainless steel.